

Temposonics®

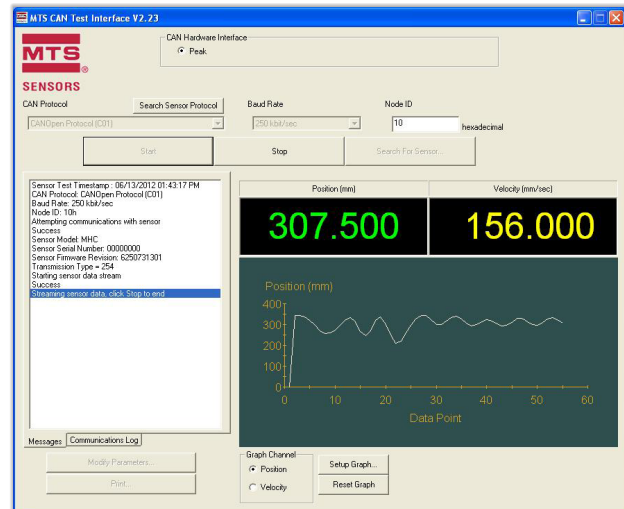
Magnetostrictive, Absolute, Non-contact
Linear-Position Sensors



MH-Series Mobile Hydraulic Sensor Test Kit Interface

CANopen, CAN Safety & CAN J1939 Outputs
Data Sheet

Document Part Number
551141 Revision B



**MH-Series Mobile Hydraulic Sensor
CAN Protocol Test Kit Interface**

FEATURES:

- User friendly Graphical User Interface (GUI)
- Selectable sensor protocol
- Sensor search capability
- Sensor node ID and baud rate programming capability
- Numerical display of position and velocity data
- Selectable graphical display of position or velocity data
- Print function to capture record of sensor verification

BENEFITS:

- Isolates sensor from vehicle system to independently determine functionality of the sensor

Product overview

Functional verification becomes even more difficult when interface protocols are involved. The CAN protocol, although very popular, still is not commonplace and it requires specialized equipment in order to evaluate sensors equipped with CAN outputs. With this situation in mind MTS created the MTS MH-Series CAN Test Interface to provide direct feedback from MTS MH-Series CAN sensors. This simplified design is the perfect tool to verify sensor functionality.

The MH-Series CAN Test Interface supports CAN J1939 and CANopen sensor outputs. These different protocols are selectable directly from the CAN Test Interface GUI. With its AC to DC converter the MH-Series Tester can provide power directly to the sensor thus isolating the sensor from the rest of the vehicle. This is an effective way for the operator to quickly verify the functionality of the sensor prior to replacing the sensor/cylinder combination. If the sensor functionality is verified, troubleshooting efforts can then be focused on other areas such as harness wiring or controller software which can also produce symptoms similar to a sensor malfunction.

The MH-Series CAN Test Interface can be quickly attached to the sensor under test by connecting one of two cable assemblies with the CAN to USB module connected to a computer running the MH-Series CAN Test Interface Software.

All specifications are subject to change. Contact MTS for specifications and engineering drawings that are critical to your application. Drawings contained in this document are for reference only. Go to <http://www.mtssensors.com> for the latest support documentation and related media.

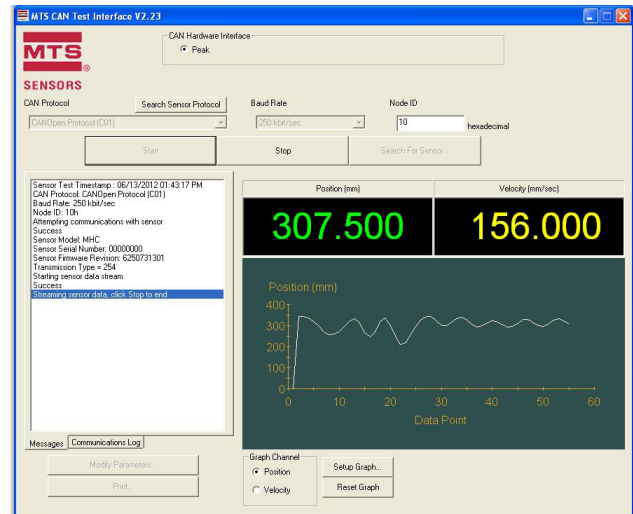
Test kit variations

Refer to the table below for ordering information.

| Description | Part no. |
|------------------------|----------|
| MH Series CAN Test Kit | 253879 |

The MH-Series CAN Test Kit includes:

- USB CAN adapter kit:
 - USB-CAN adapter
 - Utility CD (inclusive manual and drivers)
- M12 test cable with DB9 connector
- Pigtailed test cable with DB9 connector
- Multi-plug 12 Vdc power supply cable with power plug adapters
- MTS CAN Test Interface installation CD
- Carrying case
- CAN Test Interface Installation Manual/User's Guide



Document Part Number: 551141, Revision B, 12/13

MTS and Temposonics are registered trademarks of MTS Systems Corporation.
All other trademarks are the property of their respective owners.
Printed in USA. Copyright © 2013 MTS Systems Corporation. All Rights Reserved in all media.



MTS Systems Corporation Sensors Division

3001 Sheldon Drive
Cary, North Carolina
27513, USA
Tel.: +1-800-633-7609
Fax: +1-919-677-2343
+1-800-498-4442
e-mail: sensorsinfo@mts.com
http://www.mtssensors.com

MTS Sensor Technologie GmbH & Co. KG

Auf dem Schüffel 9
D - 58513 Lüdenscheld, Germany
Tel.: +49-2351-9587-0
Fax: +49-2351-56491
e-mail: info@mtssensor.de
http://www.mtssensor.de

MTS Sensors Technology Corporation

737 Aihara-cho, Machida-shi
Tokyo 194-0211, Japan
Tel.: +81-42-775-3838
Fax: +81-42-775-5516
e-mail: info@mtssensor.co.jp
http://www.mtssensor.co.jp